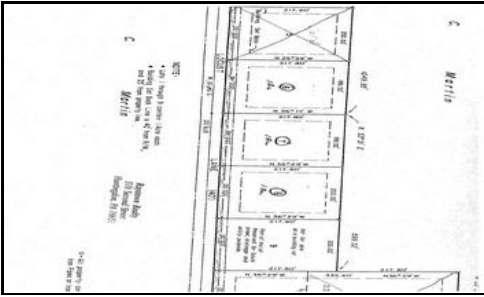


**Raystown Realty**  
**(814) 643-5054**

January 16, 2012



Address: **Lot 6 Locust Lane**  
**Alexandria, PA 16611**

List Price: **\$24,900**  
Listing #: **2212101**

Status: **Active**  
MLS Area: **Juniata Valley**

**City water and sewer available for these JVSD building lots. Underground utilities, hillside lots on township road conveniently located outside of Alexandria. 3 lots available at \$24,900 each. See [www.raystownrealty.com](http://www.raystownrealty.com) for full info, maps and surveys**

**Comments: City water and sewer available for these JVSD building lots (buyer must tap into both and pay tap in fees). Underground utilities, hillside lots on township road conveniently located outside of Alexandria. 3 lots available at \$24,900 each (lots, 6, 7 & 8). Tap in fees to be the responsibility of buyer. Follow Rt. 22W past entrance to Alexandria (Rt. 305), go short distance and see Locust Lane on lefthand side of road, take left onto Locust Lane and follow to sign.**

Property Information		Property Features	
Est Acres:	<b>1.00</b>	Gross Taxes:	<b>NYA</b>
Lot Size:	<b>1</b>	Tax Class:	<b>VLT</b>
Frontage Ft:	<b>200</b>	Tax Yr:	<b>11</b>
Depth Ft:		Assessments:	
Elem School:	<b>JV Elem</b>	Water Type:	<b>Municipal</b>
JH/Mdl School:	<b>JV JR/Senior</b>	Sewer Type:	<b>Municipal</b>
Sr High School:	<b>JV JR/Senior</b>	Fuel Type:	
Region:	<b>Porter</b>	Flood:	<b>No</b>
S-T-R:	<b>- -</b>	Zoning:	<b>None</b>
Possession:	<b>settl</b>	Plat:	
Terms:		Parcel:	<b>part of 38-05-79</b>
Abstract Loc:		Latitude:	
Assessed Value:		Longitude:	
Legal Description:	<b>Part of TP#38-05-79, DBV 191-735, NYA, Protective covenants</b>		
		Prot Cov	
		Rolling	