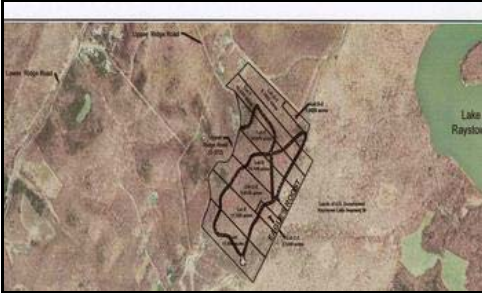


Raystown Realty

(814) 643-5054

May 10, 2010



Address: **Lot C-2 Eagles Roost, Upper Ridge Road
James Creek, PA 16657**

List Price: **\$215,900**

Listing #: **2210126**

Status: **Active**

MLS Area: **James Creek**

Wooded lots with wonderful lake views. Five lots available, with varying sizes and prices. Gated development with Protective Covenants. Only minutes from Shy Beaver Boat Launch. Rt. 26 to Shy Beaver Rd. to Upper Ridge Rd. 1.4 mi. to gate on left.

Comments: **Lot A with 11.698 acres for \$195,900. Lot C-1 with 2.124 acres for \$99,900. Lot C-2 with 40'x40' metal garage on 9.6135 acres for \$215,900. Lot G-1 with 8.3602 acres for \$159,900. Lot G-2 with 1.6528 acres for \$69,900.**

Property Information

Est Acres:		Gross Taxes:	TBD
Lot Size:	see comments	Tax Class:	
Frontage Ft:		Tax Yr:	
Depth Ft:		Assessments:	
Elem School:	Tussey Mtn	Water Type:	None
JH/Mdl School:	Tussey Mtn	Sewer Type:	None
Sr High School:	Tussey Mtn	Fuel Type:	
Region:	Hopewell	Flood:	No
S-T-R:	- 16 -	Zoning:	None
Possession:		Plat:	
Terms:		Parcel:	60-03-50.19
Abstract Loc:		Latitude:	
Assessed Value:		Longitude:	
Legal Description:	Part of TP #16-03-50.19, Part of DBV 889/42, April 1, 2008.		

Property Features

**Borders Fed Ld
Gate/Cable
Lake View
Mountain View
Prot Cov
Wooded**

Pictures

